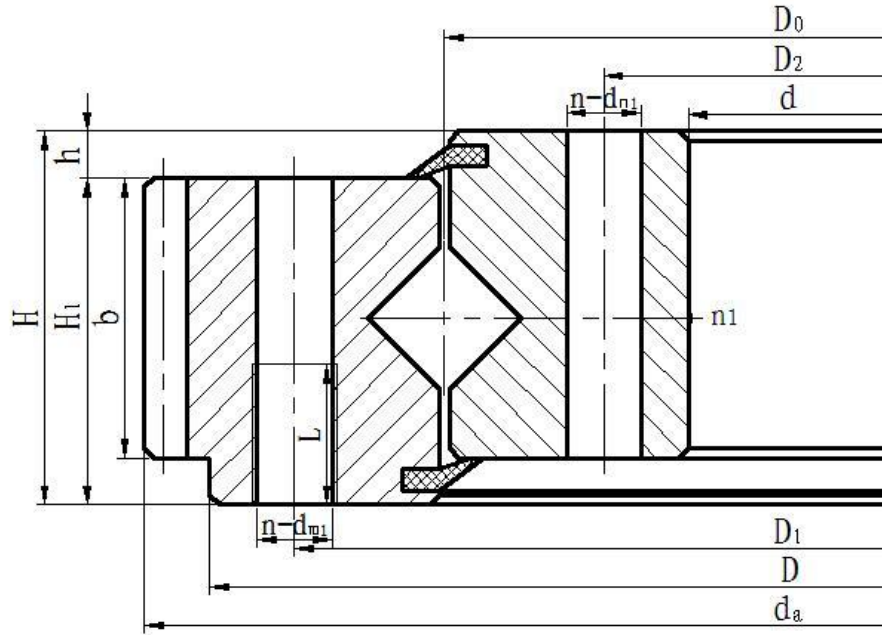


11 系列单排交叉滚柱式回转支承 (JB/T2300-1999)

11 Series Single-Row Crossed Roller Type Slewing Rings(JB/T2300-1999)

Outer Gear Type 外齿型



- (1)--回转支承型式 Model of Slewing Ring
 11: 单排交叉滚柱式 Single-Row Crossed Roller Type
- (2)--齿轮传动型号 Gear Type
 0: 无齿, No Gear
 1: 正常, 外齿 Normal, Outer Gear
 2: 大模数, 外齿 Large Module, Outer Gear
 3: 正常, 内齿 Normal, Inner Gear
 4: 大模数, 内齿 Large Module, Inner Gear
- (3)--滚动物直径 Roller Diameter, mm
- (4)--滚道中心直径 Raceway PCD, mm

- (5)--安装配合型式 Installation Fitting Type
 0: 无止口型 No fitting circle 1: 有止口型 With fitting circle
 2: 特殊型 Special
- (6)--安装孔型式 Mounting Hole Type
 0: 内外圈都为通孔 Through Holes for Both Rings
 1: 内外圈都为螺纹孔 Threaded Holes for Both Rings
 2: 外圈为通孔, 内圈为螺纹孔 Outer Ring with Through Holes, Inner Ring with Threaded Holes
 3: 外圈为螺纹孔, 内圈为通孔 Outer Ring with Threaded Holes, Inner Ring with Through Holes

No.	Model	Overall dimensions 外形尺寸			Mounting hole dimensions 安装孔尺寸						Structural dimensions 结构尺寸			Gear Data 齿轮参数				Weight 重量
		D	d	H	D ₁	D ₂	d _{n1} d _{n2}	d _{m1} d _{m2}	L	N	n ₁	H ₁	h	b	m	d _a	z	
1	111.16.200	280	120	60	248	152	16	M14	32	12	2	50	10	40	3	300	98	22
2	111.16.224	304	144	60	272	174	16	M14	32	12	2	50	10	40	3	321	105	24

3	111.16.250	330	170	60	298	202	16	M14	32	12	2	50	10	40	4	352	86	28
4	111.16.280	360	200	60	328	232	16	M14	32	12	2	50	10	40	4	384	94	32
5	111.16.315	408	222	60	370	260	17	M16	32	12	2	50	10	40	5	435	85	35
6	111.16.355	448	262	60	410	300	17	M16	32	12	2	50	10	40	5	475	93	41
7	111.20.400	493	307	70	457	343	18	M16	32	16	2	60	10	50	6	528	86	65
8	111.20.450	543	357	70	507	393	18	M16	32	16	2	60	10	50	6	576	94	71
9	111.25.500	602	398	75	566	434	18	M16	32	20	4	65	10	60	5	629	123	80
	6														628.8	102		
10	111.25.560	662	458	75	626	494	18	M16	32	20	4	65	10	60	5	689	135	90
	6														688.8	112		
11	111.25.630	732	528	75	696	564	18	M16	32	24	4	65	10	60	6	772.8	126	100
	8														774.4	94		
12	111.25.710	812	608	75	776	644	18	M16	32	24	4	65	10	60	6	850.8	139	110
	8														854.4	104		
13	111.28.800	922	678	82	878	722	22	M20	40	30	6	72	10	65	8	966.4	118	170
	10														968	94		
14	111.28.900	1022	778	82	978	822	22	M20	40	30	6	72	10	65	8	1062.4	130	190
	10														1068	104		
15	111.28.1000	1122	878	82	1078	922	22	M20	40	36	6	72	10	65	10	1188	116	210
	12														1185.6	96		
16	111.25.1120	1242	998	82	1198	1042	22	M20	40	36	6	72	10	65	10	1298	127	230
	12														1305.6	106		
17	111.32.1250	1390	1110	91	1337	1163	26	M24	48	40	5	81	10	75	12	1449.6	118	350
	14														1453.2	101		
18	111.32.1400	1540	1260	91	1487	1313	26	M24	48	40	5	81	10	75	12	1605.6	131	400
	14														1607.2	112		
19	111.32.1600	1740	1460	91	1687	1513	26	M24	48	45	5	81	10	75	14	1817.2	127	440
	16														1820.8	111		
20	111.32.1800	1940	1660	91	1887	1713	26	M24	48	45	5	81	10	75	14	2013.2	141	500
	16														2012.8	123		
21	111.40.2000	2178	1825	112	2110	1891	33	M30	60	48	8	100	12	90	16	2268.8	139	900
	18														2264.4	123		
22	111.40.2240	2418	2065	112	2350	2131	33	M30	60	48	8	100	12	90	16	2492.8	153	1000

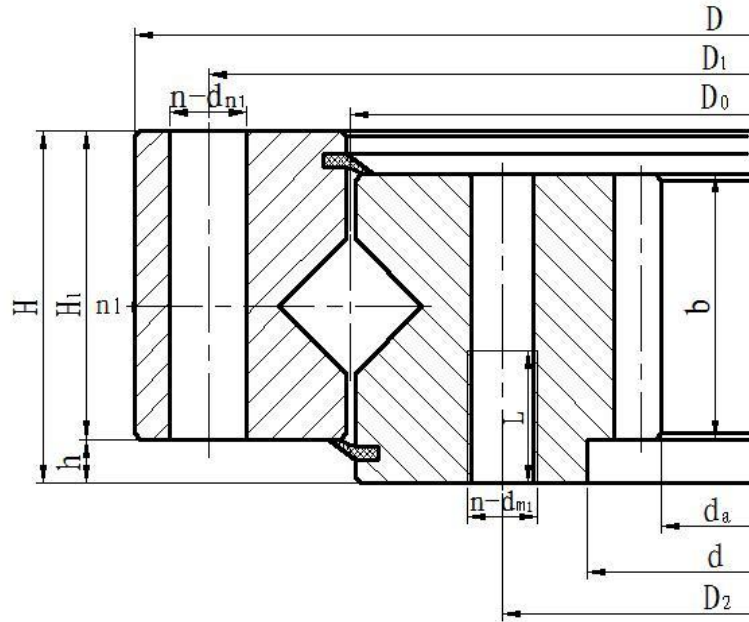
	112.40.2240														18	2498.4	136	
23	111.40.2500	2678	2325	112	2610	2391	33	M30	60	56	8	100	12	90	18	2768.4	151	1100
	20														2776	136		
24	111.40.2800	2978	2625	112	2910	2691	33	M30	60	56	8	100	12	90	18	3074.4	168	1250
	20														3076	151		
25	111.50.3150	3376	2922	134	3286	3014	45	M42	84	56	8	122	12	110	20	3476	171	2150
	22														3471.6	155		
26	111.50.3550	3776	3322	134	3686	3414	45	M42	84	56	8	122	12	110	20	3876	191	2470
	22														3889.6	174		
27	111.50.4000	4226	3772	134	4136	3864	45	M42	84	60	10	122	12	110	22	4329.6	194	2800
	25														4345	171		
28	111.50.4500	4726	4272	134	4636	4364	45	M42	84	60	10	122	12	110	22	4835.6	217	3100
	25														4845	191		

Remark

- 1.序号 1-8 带堵塞的座圈安装孔应减少 1 个，但仍按表中个数均布，在减少的安装孔处打堵塞。One of the seal ring mounting holes with plugs for No.1-8 shall be removed. The remaining holes shall be evenly distributed in accordance with the quantity specified in the table, and a plug shall be fitted at the location of the removed hole.
- 2.安装配合型式和安装孔型式在基本型号中未给出，用户可根据要求选择。Specific requirements considered, users can choose proper mounting hole's type and fitting type.

11 Series Single-Row Crossed Roller Type Slewing Rings(JB/T2300-1999)

Inner Gear Type 内齿型



- (1)--回转支承型式 Model of Slewing Ring
 - 11: 单排交叉滚柱式 Single-Row Crossed Roller Type
- (2)--齿轮传动型号 Gear Type
 - 0: 无齿, No Gear
 - 1: 正常, 外齿 Normal, Outer Gear
 - 2: 大模数, 外齿 Large Module, Outer Gear
 - 3: 正常, 内齿 Normal, Inner Gear
 - 4: 大模数, 内齿 Large Module, Inner Gear
- (3)--滚动体直径 Roller Diameter, mm
- (4)--滚道中心直径 Raceway PCD, mm
- (5)--安装配合型式 Installation Fitting Type
 - 0: 无止口型 No fitting circle 1: 有止口型 With fitting circle
 - 2: 特殊型 Special
- (6)--安装孔型式 Holes
 - 0: 内外圈都为通孔 Through Holes for Both Rings
 - 1: 内外圈都为螺纹孔 Threaded Holes for Both Rings
 - 2: 外圈为通孔, 内圈为螺纹孔 Outer Ring with Through Holes, Inner Ring with Threaded Holes
 - 3: 外圈为螺纹孔, 内圈为通孔 Outer Ring with Threaded Holes, Inner Ring with Through Holes

No. 序号	Model 型号	Overall dimensions 外形尺寸			Mounting hole dimensions 安装孔尺寸						Structural dimensions 结构尺寸			Gear Data 齿轮参数				Weight 重量
		D	d	H	D ₁	D ₂	d _{n1} d _{n2}	d _{m1} d _{m2}	L	N	n ₁	H ₁	h	b	m	d _a	z	
1	113.16.315	408	222	60	370	260	17	M16	32	12	2	50	10	40	5	190	40	35
2	113.16.355	448	262	60	410	300	17	M16	32	12	2	50	10	40	5	235	49	41
3	113.20.400	493	307	70	457	343	18	M16	32	16	2	60	10	50	6	276	48	65
4	113.20.450	543	357	70	507	393	18	M16	32	16	2	60	10	50	6	324	56	71

5	113.25.500	602	398	75	566	434	18	M16	32	20	4	65	10	60	5	367	74	80
	114.25.500														6	368.4	62	
6	113.25.560	662	458	75	626	494	18	M16	32	20	4	65	10	60	5	427	86	90
	114.25.560														6	428.4	72	
7	113.25.630	732	528	75	696	564	18	M16	32	24	4	65	10	60	6	494.4	83	100
	114.25.630														8	491.2	62	
8	113.25.710	812	608	75	776	644	18	M16	32	24	4	65	10	60	6	572.4	96	110
	114.25.710														8	571.2	72	
9	113.28.800	922	678	82	878	722	22	M20	40	30	6	72	10	65	8	635.2	80	170
	114.28.800														10	634	64	
10	113.28.900	1022	778	82	978	822	22	M20	40	30	6	72	10	65	8	739.2	93	190
	114.28.900														10	734	74	
11	113.28.1000	1122	878	82	1078	922	22	M20	40	36	6	72	10	65	10	824	83	210
	114.28.1000														12	820.8	69	
12	113.25.1120	1242	998	82	1198	1042	22	M20	40	36	6	72	10	65	10	944	95	230
	114.25.1120														12	940.8	79	
13	113.32.1250	1390	1110	91	1337	1163	26	M24	48	40	5	81	10	75	12	1048.8	88	350
	114.32.1250														14	1041.6	75	
14	113.32.1400	1540	1260	91	1487	1313	26	M24	48	40	5	81	10	75	12	1192.8	100	400
	114.32.1400														14	1195.6	86	
15	113.32.1600	1740	1460	91	1687	1513	26	M24	48	45	5	81	10	75	14	1391.6	100	440
	114.32.1600														16	1382.4	87	
16	113.32.1800	1940	1660	91	1887	1713	26	M24	48	45	5	81	10	75	14	1573.6	113	500
	114.32.1800														16	1574.4	99	
17	113.40.2000	2178	1825	112	2110	1891	33	M30	60	48	8	100	12	90	16	1734.4	109	900
	114.40.2000														18	1735.2	97	
18	113.40.2240	2418	2065	112	2350	2131	33	M30	60	48	8	100	12	90	16	1990.4	125	1000
	114.40.2240														18	1987.2	111	
19	113.40.2500	2678	2325	112	2610	2391	33	M30	60	56	8	100	12	90	18	2239.2	125	1100
	114.40.2500														20	2228	112	
20	113.40.2800	2978	2625	112	2910	2691	33	M30	60	56	8	100	12	90	18	2527.2	141	1250
	114.40.2800														20	2528	127	
21	113.50.3150	3376	2922	134	3286	3014	45	M42	84	56	8	122	12	110	20	2828	142	2150

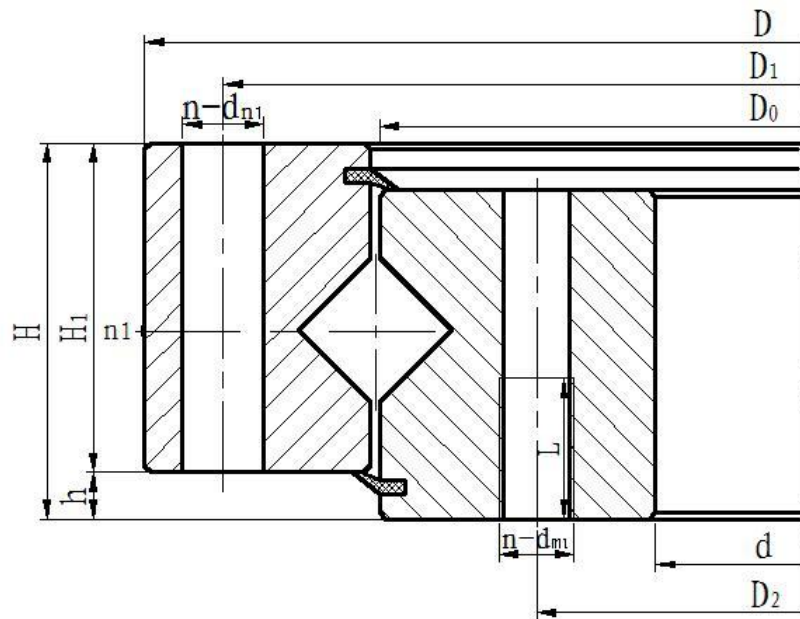
	114.50.3150														22	2824.8	129	
22	113.50.3550	3776	3322	134	3686	3414	45	M42	84	56	8	122	12	110	20	3228	162	2470
	22														3220.8	147		
23	113.50.4000	4226	3772	134	4136	3864	45	M42	84	60	10	122	12	110	22	3660.8	167	2800
	25														3660	147		
24	113.50.4500	4726	4272	134	4636	4364	45	M42	84	60	10	122	12	110	22	4166.8	190	3100
	25														4160	167		

Remark

1. 序号 1-4 带堵塞的座圈安装孔应减少 1 个，但仍按表中个数均布，在减少的安装孔处打堵塞。One of the seal ring mounting holes with plugs for No.1-4 shall be removed. The remaining holes shall be evenly distributed in accordance with the quantity specified in the table, and a plug shall be installed at the location of the removed hole.
2. 安装配合型式和安装孔型式在基本型号中未给出，用户可根据要求选择。Specific requirements considered, users can choose proper mounting hole's type and fitting type.

11 Series Single-Row Crossed Roller Type Slewing Rings(JB/T2300-1999)

Non- Gear Type 无齿型



- | | |
|--|--|
| <p>(1)--回转支承型式 Model of Slewing Ring
11: 单排交叉滚柱式 Single-Row Crossed Roller Type</p> <p>(2)--齿轮传动型号 Gear Type
0: 无齿, No Gear
1: 正常, 外齿 Normal, Outer Gear
2: 大模数, 外齿 Large Module, Outer Gear
3: 正常, 内齿 Normal, Inner Gear
4: 大模数, 内齿 Large Module, Inner Gear</p> <p>(3)--滚动物直径 Roller Diameter, mm</p> <p>(4)--滚道中心直径 Raceway PCD, mm</p> | <p>(5)--安装配合型式 Installation Fitting Type
0: 无止口型 No fitting circle 1: 有止口型 With fitting circle
2: 特殊型 Special</p> <p>(6)--安装孔型式 Mounting Hole Type
0: 内外圈都为通孔 Through Holes for Both Rings
1: 内外圈都为螺纹孔 Threaded Holes for Both Rings
2: 外圈为通孔, 内圈为螺纹孔 Outer Ring with Through Holes, Inner Ring with Threaded Holes
3: 外圈为螺纹孔, 内圈为通孔 Outer Ring with Threaded Holes, Inner Ring with Through Holes</p> |
|--|--|

No. 序号	Model 型号	Overall dimensions 外形尺寸			Mounting hole dimensions 安装孔尺寸						Structural dimensions 结构尺寸			Weight 重量
		D	d	H	D ₁	D ₂	d _{n1} d _{n2}	d _{m1} d _{m2}	L	N	n ₁	H ₁	h	
1	110.16.200	280	120	60	248	152	16	M14	32	12	2	50	10	22
2	110.16.224	304	144	60	272	174	16	M14	32	12	2	50	10	24
3	110.16.250	330	170	60	298	202	16	M14	32	12	2	50	10	28
4	110.16.280	360	200	60	328	232	16	M14	32	12	2	50	10	32
5	110.16.315	408	222	60	370	260	17	M16	32	12	2	50	10	35

6	110.16.355	448	262	60	410	300	17	M16	32	12	2	50	10	41
7	110.20.400	493	307	70	457	343	18	M16	32	16	2	60	10	65
8	110.20.450	543	357	70	507	393	18	M16	32	16	2	60	10	71
9	110.25.500	602	398	75	566	434	18	M16	32	20	4	65	10	80
10	110.25.560	662	458	75	626	494	18	M16	32	20	4	65	10	90
11	110.25.630	732	528	75	696	564	18	M16	32	24	4	65	10	100
12	110.25.710	812	608	75	776	644	18	M16	32	24	4	65	10	110
13	110.28.800	922	678	82	878	722	22	M20	40	30	6	72	10	170
14	110.28.900	1022	778	82	978	822	22	M20	40	30	6	72	10	190
15	110.28.1000	1122	878	82	1078	922	22	M20	40	36	6	72	10	210
16	110.25.1120	1242	998	82	1198	1042	22	M20	40	36	6	72	10	230
17	110.32.1250	1390	1110	91	1337	1163	26	M24	48	40	5	81	10	350
18	110.32.1400	1540	1260	91	1487	1313	26	M24	48	40	5	81	10	400
19	110.32.1600	1740	1460	91	1687	1513	26	M24	48	45	5	81	10	440
20	110.32.1800	1940	1660	91	1887	1713	26	M24	48	45	5	81	10	500
21	110.40.2000	2178	1825	112	2110	1891	33	M30	60	48	8	100	12	900
22	110.40.2240	2418	2065	112	2350	2131	33	M30	60	48	8	100	12	1000
23	110.40.2500	2678	2325	112	2610	2391	33	M30	60	56	8	100	12	1100
24	110.40.2800	2978	2625	112	2910	2691	33	M30	60	56	8	100	12	1250
25	110.50.3150	3376	2922	134	3286	3014	45	M42	84	56	8	122	12	2150
26	110.50.3550	3776	3322	134	3686	3414	45	M42	84	56	8	122	12	2470
27	110.50.4000	4226	3772	134	4136	3864	45	M42	84	60	10	122	12	2800
28	110.50.4500	4726	4272	134	4636	4364	45	M42	84	60	10	122	12	3100

Remark

1. 序号 1-8 带堵塞的座圈安装孔应减少 1 个, 但仍按表中个数均布, 在减少的安装孔处打堵塞。One of the seal ring mounting holes with plugs for No.1-8 shall be removed. The remaining holes shall be evenly distributed in accordance with the quantity specified in the table, and a plug shall be installed at the location of the removed hole.

2. 安装配合型式和安装孔型式在基本型号中未给出, 用户可根据要求选择。Specific requirements considered, users can choose proper mounting hole's type and fitting type.